

## Research Article

### The Cause of Shallow Tunnel Collapse and Simulation Analysis of Consolidation for a Collapsed Tunnel

Shucai Li, Shaoshuai Shi, Liping Li, Zongqing Zhou, Chaoqun Sun,  
Qinghan Wang and Hongliang Liu  
Geotechnical and Structural Engineering Research Center, Shandong University,  
Jinan, Shandong, 250061, China

**Abstract:** In order to ensure the safety of the shallow tunnels construction, it is very important to find the reasons of the collapse. During Fujiachong tunnel construction, collapse of the section Yk25 + 547~Yk25 + 552. Distributions of cracked surrounding rock, rainfall, geological forecast were discussed for reason of tunnel collapse. According to in-situ construction condition, reinforced support program was applied to the surrounding rock consolidation of the tunnel. In order to assess consolidation effect, a cross-sections of collapse zone measurement was increased and simulation analysis was applied to the section. The results of in-situ measurement and simulation results show that tunneling collapse zone was consolidated by reinforced support program successfully.

**Keywords:** Collapse, FEM simulation, ground penetrating radar, shallow tunnel

## INTRODUCTION

With the rapid development of underground engineering construction in China, the engineering geological conditions encountered complexity problems facing the increasingly challenging (Li *et al.*, 2007, 2008; Zhang *et al.*, 2009; Qian and Rong, 2008). Tunnel collapse is one of the most common accidents in the tunnel construction. Serious tunnel collapse accidents at home and abroad bring much personal injuries and economic losses (Chen *et al.*, 2009; An *et al.*, 2011).

The possible collapse of a tunnel is a rather complex problem because it is strongly affected by the random variability of the mechanical properties of the rock in situ and from the presence of cracks and fractures in the rock banks (Hyu-Soung *et al.*, 2009). It can be inferred that uncertainties, which are embedded intricately in tunnel construction as well as given ground conditions, would be major causes for tunnel collapse (Fraldi and Guarracino, 2011).

Fujiachong Tunnel in Yi (chang) -Ba (dong) Expressway is 650 M long, the maximum burial depth is 82 M, so it is shallow tunnel. The geological conditions around it were surveyed before its excavation. It was found that the overall geological conditions predicted from the geological survey were closely matched the actual conditions observed during the tunnel's excavation. The surrounding rocks of the tunnel are Conglomerate and Shale. The rock mass can be classified as a soft rock. In the tunnel area, one joint set N35/50 of with a joint spacing of 20-50 mm were



Fig. 1: The collapse of tunnel

observed. More weathered zone could be found around the joints through which a groundwater flow at the access tunnel could occur.

During Fujiachong tunnel construction, collapse of the section Yk25 + 547~Yk25 + 552, as shown in Fig. 1. In this study, distributions of cracked surrounding rock, rainfall, geological forecast were discussed for reason of tunnel collapse. According to in-situ construction condition, reinforced support program was applied to the surrounding rock consolidation of the tunnel. In order to assess consolidation effect, a cross-sections of collapse zone measurement was increased and simulation analysis was applied to the section.

This measurement method is successfully applied in the Fujiachong tunnel of Yi-ba expressway and has provided a reference for the similar engineering constructions.

**Corresponding Author:** Shaoshuai Shi, Geotechnical and Structural Engineering Research Center, Shandong University, Jinan, Shandong, 250061, China

This work is licensed under a Creative Commons Attribution 4.0 International License (URL: <http://creativecommons.org/licenses/by/4.0/>).

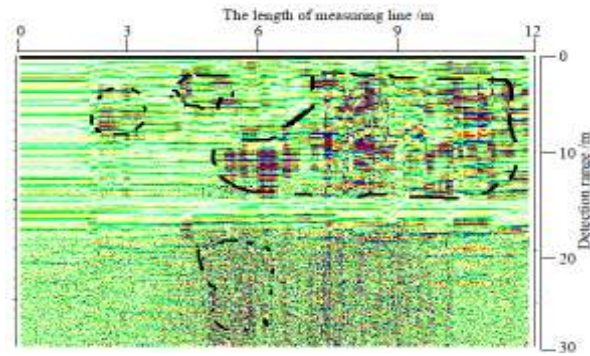


Fig. 2: The interpretation map of GPR

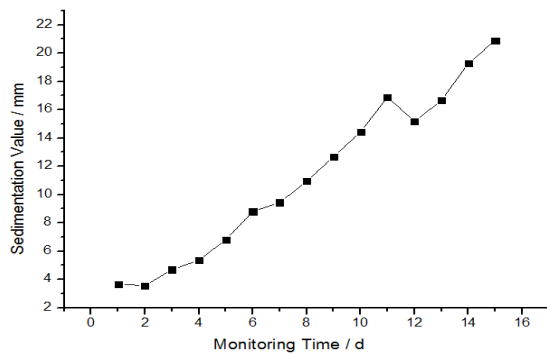


Fig. 3: The sedimentation value of monitoring section

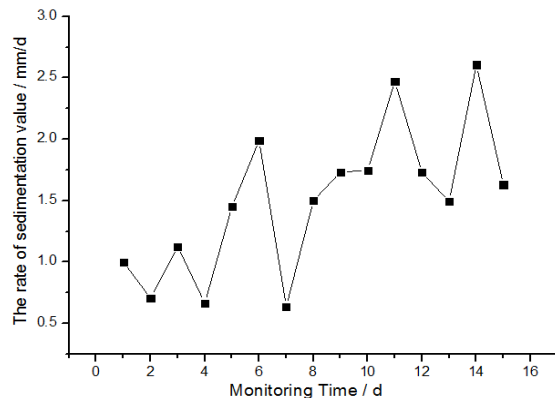


Fig. 4: The sedimentation rate

### CAUSE ANALYSIS OF SHALLOW TUNNEL COLLAPSE

**Ground penetrating radar prediction:** GPR working principle is based on the electromagnetic waves and the structure and distribution of unfavorable geology body are analyzed and judged by the waveform.

The reflected wave energy is determined by reflection coefficient R. For the tunnel project, the unfavorable geology body and surrounding rock all have high impedance, so the reflection coefficient R and refraction coefficient T can be represented below (Cardarelli *et al.*, 2003; Kasper and Meschke, 2006):

$$R = \frac{\sqrt{\varepsilon_1} - \sqrt{\varepsilon_2}}{\sqrt{\varepsilon_1} + \sqrt{\varepsilon_2}} \quad (1)$$

$$T = \frac{2\sqrt{\varepsilon_1}}{\sqrt{\varepsilon_1} + \sqrt{\varepsilon_2}} \quad (2)$$

$\varepsilon_1$  and  $\varepsilon_2$  are relative dielectric constant of media before and after the interface.

The GPR prediction uses the SIR3000 radar and the frequency is 100 MHz. The prediction results show in Fig. 2.

The GPR prediction method was used at the tunnel face of YK25 + 530 sections, the detection range is YK25 + 530~YK25 + 560. Based on the tunnel geological condition and prediction results, the surrounding rock in this section was cracked and the water content increased.

**Monitoring measurement analysis:** According to relevant design requirements, the monitoring was set up in section YK25 + 540. The sedimentation value of monitoring section and the sedimentation rate are shown in Fig. 3 and 4.

In the monitoring time, the final sedimentation value is 20.90 mm and the maximum sedimentation rate is 2.67 mm/day. Therefore, the sedimentation value and sedimentation rate are change frequently. It is easy to collapse under the influence of construction disturbance.

**Cause analysis:** According to GPR prediction, surrounding rock, rainfall, the cause of collapse can be represented below.

The surrounding rock is weathering shale with layer structure and fracture development. In no effective bound, the layer will damage which led to the collapse eventually.

Continuous rainfall in the tunnel area, the earth's surface did not take timely measures of drainage. Large groundwater was rich in geotechnical layer causing the surrounding rock instability.

The result of GPR prediction shown that surrounding rock in this section was cracked and the analysis of monitoring measurement shown that it was easy to collapse under the influence of construction disturbance. Therefore, collapse is the result of many factors working together.

**Collapse treatment scheme:** The collapse treatment scheme of tunnel is shown in Fig. 5. The collapse of the ground is maintained security and rainproof cover and all around to dig the drain.

The thickness of 10 cm C25 shotcrete is used to close the collapse section and tunnel face. After the completion of the closed, the support of No. 16 joist steel is used to prevent deformation.

No. 16 joist steel acing of 50 cm is used in the bottom of collapse cavity and the thickness of 80 cm

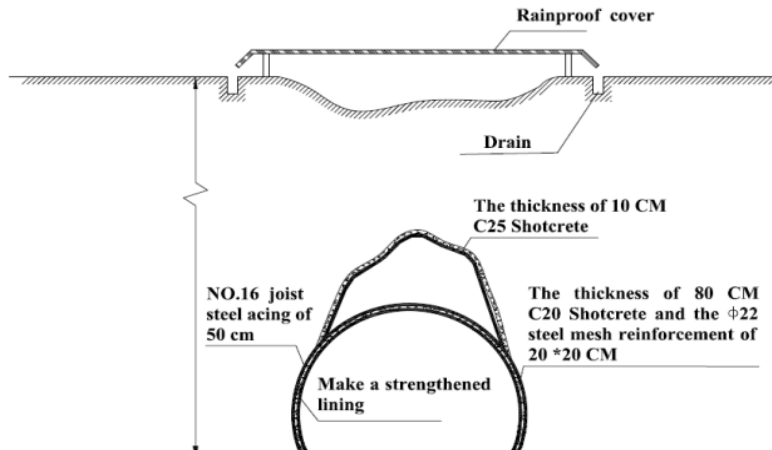


Fig. 5: Collapse treatment scheme

C20 shotcrete and  $\Phi 22$  steel mesh reinforcement of 20\*20 cm are used in protect arch. The reinforced lining is made after the arch finished.

### SIMULATION ANALYSIS

**Overview of FLAC 3D:** FLAC 3D is a three-dimensional explicit finite-difference program for engineering mechanics computation. FLAC 3D extends the analysis capability of FLAC into three dimensions, simulating the behavior of three-dimensional structures built of soil, rock or other materials that undergo plastic flow when their yield limits are reached. Each element behaves according to a prescribed linear or nonlinear stress/strain law in response to applied forces or boundary restraints. The material can yield and flow and the grid can deform (in large-strain mode) and move with the material that is represented. The explicit, Lagrangian, calculation scheme and the mixed-discretization zoning technique used in FLAC 3D ensure that plastic collapse and flow are modeled very accurately. FLAC 3D offers an ideal analysis tool for solution of three-dimensional problems in geotechnical engineering.

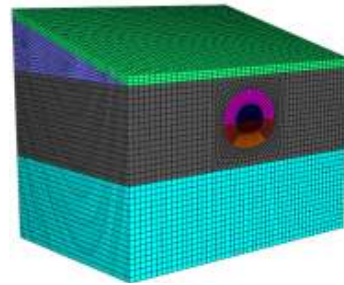


Fig. 6: Computation model of tunnel

$n_j$  = The component of the unit normal vector of the external surface  $v_i$  can be expressed in such a way by Formula (4):

$$v_{ij} = -\frac{1}{3v} \sum_{i=1}^4 v_i' n_j^{(l)} s^{(l)} \quad (4)$$

where,

$l$  : The variable of node  $m$

$(l)$  : The variable of surface  $l$

**Calculation principle:** With tetrahedral as an example, Nodes number from one to four and surface  $L$  represents the surface relative to node  $L$ . The velocity component of any point in this tetrahedral is  $v_i$ , in the case of constant strain unit,  $v_i$  is shown as Linear distribution, in this case, we can know from Gaussian formula:

$$\int_v v_{i,j} dv = \int_s r_i n_j ds \quad (3)$$

where,

$v$  = The volume of the tetrahedral

$s$  = The external surface area of the tetrahedral

FLAC 3d is a way which regards nodes as objects of calculation. Where the forces and weights are concentrated in the nodes and then, The Calculation Results in time domain can be find by the motion equation. The motion equation of the nodes can be expressed as follows:

$$v_i'(t+\frac{t}{2}) = v_i'(t-\frac{t}{2}) + \frac{F_i^l(t)}{m^l} \Delta t \quad (5)$$

The strain increments of units in some step can be expressed as follows:

$$\Delta e_{ij} = \frac{1}{2} (v_{i,j} + v_{j,i}) \Delta t \quad (6)$$

Table 1: Physico-mechanical parameters of surrounding rock

Parameters	E (GPa)	v	P (kg/m <sup>3</sup> )	φ (°)	C (MPa)
Soil	0.01	0.42	1380	17	0.01
Surrounding rocks 1	1	0.29	1900	14.4	34.80
Surrounding rocks 2	8	0.24	2470	32.1	34.70
Shotcrete	21	0.20			22
Joist steel	206	0.25	7850		

The stress increments can be found by the constitutive equation, with the strain increments known.

When the stress increments superposed, the total stress exposed. With the unbalanced force of node in the next step got by the Principle of Virtual Work, the next step of calculation can be done.

**Calculation model:** In this study, FLAC 3D analysis software was used for numerical calculation. According to the calculation principle of underground structure, a simplified numerical model was established combined with the actual tunnel structure and geological conditions (Zhu *et al.*, 2008). The model is 90 m in x-direction, 60 m in z-direction and 90-120 m in y-direction. Considering the calculation accuracy, the model was divided into 203088 elements and 212144 nodes were in it. Elements were meshed densely in tunnel and adjacent and others were sparse, which can satisfy the precision requirement of model (She and He, 2006). Normal constraints were applied to the left, right, top, rear and lower boundary. Boundary stress was on the top. The horizontal stress was 1.2 times the value of vertical stress considered geological and the related stress data. Calculation model was shown in Fig. 6.

**Mechanical parameters and boundary conditions:** Mohr-Coulomb criterion was selected to determine rock yield criterion in the numerical calculation, at the same time the rock tensile yield, elastic-plastic deformation and large deformation were considered in it. Rock were arranged to be ideal elastic plastic material which met Mohr-Coulomb standards. Null model was used to simulate the excavation of tunnel. Shell structure element of FLAC 3D was used in the primary of composite support (Tan *et al.*, 2009). Steel arch effect can be obtained by equivalent method to achieve. The elastic modulus of steel arch was converted to the elastic modulus of shotcrete (Jiang and Li, 2007), which can be expressed as follow:

$$E = E_0 + \frac{S_g \times E_g}{S_c} \quad (7)$$

where,

- E = The elastic modulus of concrete after conversion
- E<sub>0</sub> = The original elastic modulus of concrete
- S<sub>g</sub> = The section area of steel arch
- E<sub>g</sub> = The elastic modulus of steel
- S<sub>c</sub> = The section area of concrete

The physico-mechanical parameters of surrounding rocks were shown in Table 1, according to the tunnel

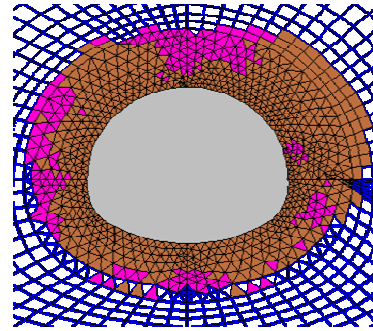


Fig. 7: The plastic zone of conventional supporting in YK25 + 550

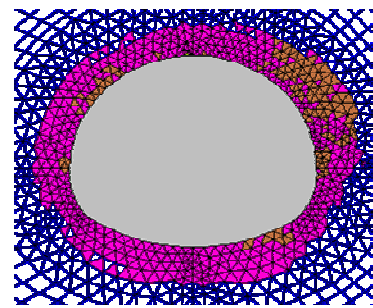


Fig. 8: The plastic zone of reinforced supporting in YK25 + 550

engineering geology, hydrogeology and related geological survey data.

**Excavation scheme:** To simulate the practical tunnel excavation sequence, excavation step is set to be 2 m in numerical calculation. Bench method was applied which was upper bench cutting and then the lower one.

### CALCULATION RESULT ANALYSIS

The numerical calculation results were analyzed to YK25 + 540 sections. As indicated in Fig. 7, large plastic zone was generated in the regular support state. The plastic zone expanded rapidly with tunnel excavation. As indicated in Fig. 8, the plastic zone became smaller after reinforced supporting for collapse section. Therefore, reinforced supporting measures play an important role in collapse treatment.

**The analysis of monitoring measurement:** According to the relevant requirements of the design, the monitoring measurement section of YK25 + 550 was set in the collapse treatment area. As indicated in Fig. 9 and 10, the final sedimentation value was 59.15 mm

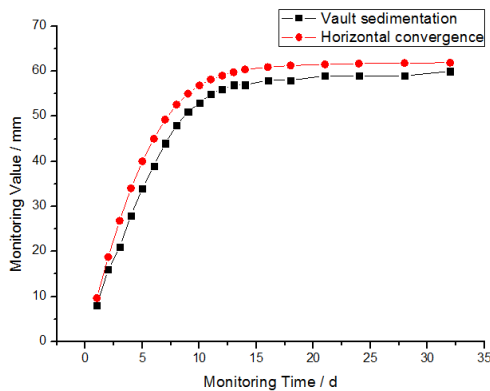


Fig. 9: The monitoring value of YK25 + 550

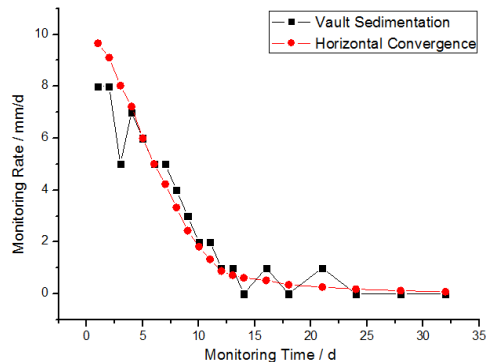


Fig. 10: The monitoring rate of YK25 + 550

And the rate of final sedimentation value was 0.05 mm/day. The rate of final sedimentation value less than and the rate of final sedimentation value was 0.05 mm/day. The rate of final sedimentation value less than 0.20 mm/day was satisfied the standard requirement. The horizontal convergence value was 61.91 mm and the rate of final horizontal convergence was 0.08 mm/day. The rate of final horizontal convergence value less than 0.10 mm/day was satisfied the standard requirement.

### CONCLUSION

Based on the study above, some important conclusions can be summarized as follows:

Distributions of cracked surrounding rock, rainfall, geological forecast were discussed for reason of tunnel collapse. In the shallow tunnel construction, the reinforced support should be make to broken layer surrounding rock and increases the drainage measures to prevent collapse. The reinforced support including joist steel, shotcrete and steel mesh reinforcement was the effective method to the shallow tunnel.

According to in-situ construction condition and simulation analysis show that tunneling collapse zone

was consolidated by reinforced support program successfully, so it can be further used for other tunnel engineering.

### ACKNOWLEDGMENT

This study was supported by National Natural Science Foundation of China No. 51139004, Open Foundation of State Key Laboratory of Hydrology-Water Resources and Hydraulic Engineering No. 2011490806, State Key Laboratory for Geo Mechanics and Deep Underground Engineering, China University of Mining & Technology No. SKLGDUEK1105, Graduate Independent Innovation Foundation of Shandong University No. yzc12137.

### REFERENCES

- An, Y.L., L.M. Peng, B. Wu and F. Zhang, 2011. Comprehensive extension assessment on tunnel collapse risk. J. Central South Univ., Sci. Technol., 42(2): 514-520.
- Cardarelli, E., C. Marrone and L. Orlando, 2003. Evaluation of tunnel stability using integrated geophysical method. Appl. Geophys., 52: 93-102.
- Chen, J.J., F. Zhou, J.S. Yang and B.C. Liu, 2009. Fuzzy analytic hierarchy process for risk evaluation of collapse during construction of mountain tunnel. Rockand Soil Mech., 30(12): 3622-3626.
- Fraldi, M. and F. Guarracino, 2011. Evaluation of impending collapse in circular tunnels by analytical and numerical approaches. Tunn. Undergr. Sp. Tech., 26: 507-516.
- Hyu-Soung, S., K. Young-Cheul, J. Yong-Soo, B. Gyu-Jin and K. Young-Geun, 2009. Methodology for quantitative hazard assessment for tunnel collapses based on case histories in Korea. Int. J. Rock Mech. Min., 46(6): 1072-1087.
- Jiang, S.P. and J.J. Li, 2007. 3D simulation and analysis of highway tunnels by use of advanced entrance construction method. Chinese J. Geotech. Eng., 29(4): 484-489.
- Kasper, T. and G. Meschke, 2006. On the influence of face pressure, grouting pressure and TBM design in soft ground tunnelling. Tunn. Undergr. Sp. Tech., 21: 160-171.
- Li, S., S. Li, Q. Zhang, Y. Xue, W. Ding, et al., 2007. Forecast of karst-fractured groundwater and defective geological conditions. Chinese J. Rock Mech. Eng., 26(2): 217-225.
- Li, S., Y. Xue, Q. Zhang, S. Li, L. Li, et al., 2008. Key technology study on comprehensive prediction and early-warning of geological hazards during tunnel construction in high-risk karst areas. Chinese J. Rock Mech. Eng., 28(7): 1297-1307.
- Qian, Q.H. and X.L. Rong, 2008. State issues and relevant recommendations for security risk management of China's underground engineering. Chinese J. Rock Mech. Eng., 27(4): 649-655.

- She, J. and C. He, 2006. 3D elastoplastic numerical simulation of surrounding rock displacement in soft surrounding rock section during construction process. *Chinese J. Rock Mech. Eng.*, 25(3): 623-629.
- Tan, D., T. Qi and Y. Mo, 2009. Numerical analysis and research on surrounding rock stability of lateral karst cave tunnel. *Chinese J. Rock Mech. Eng.*, 28(Supp2): 3497-3503.
- Zhang, Q.S., S.C. Li, H.W. Han, Y.H. Ge, R.T. Liu, *et al.*, 2009. Study on risk evaluation and water inrush disaster preventing technology during construction of karst tunnels. *J. Shandong Univ., Eng. Sci.*, 39(3): 106-110.
- Zhu, Z.G., W.J. Li and Y.X. Song, 2008. 3D numerical simulation of super-large span railway station. *Rock Soil Mech.*, 29(Supp): 277-282.